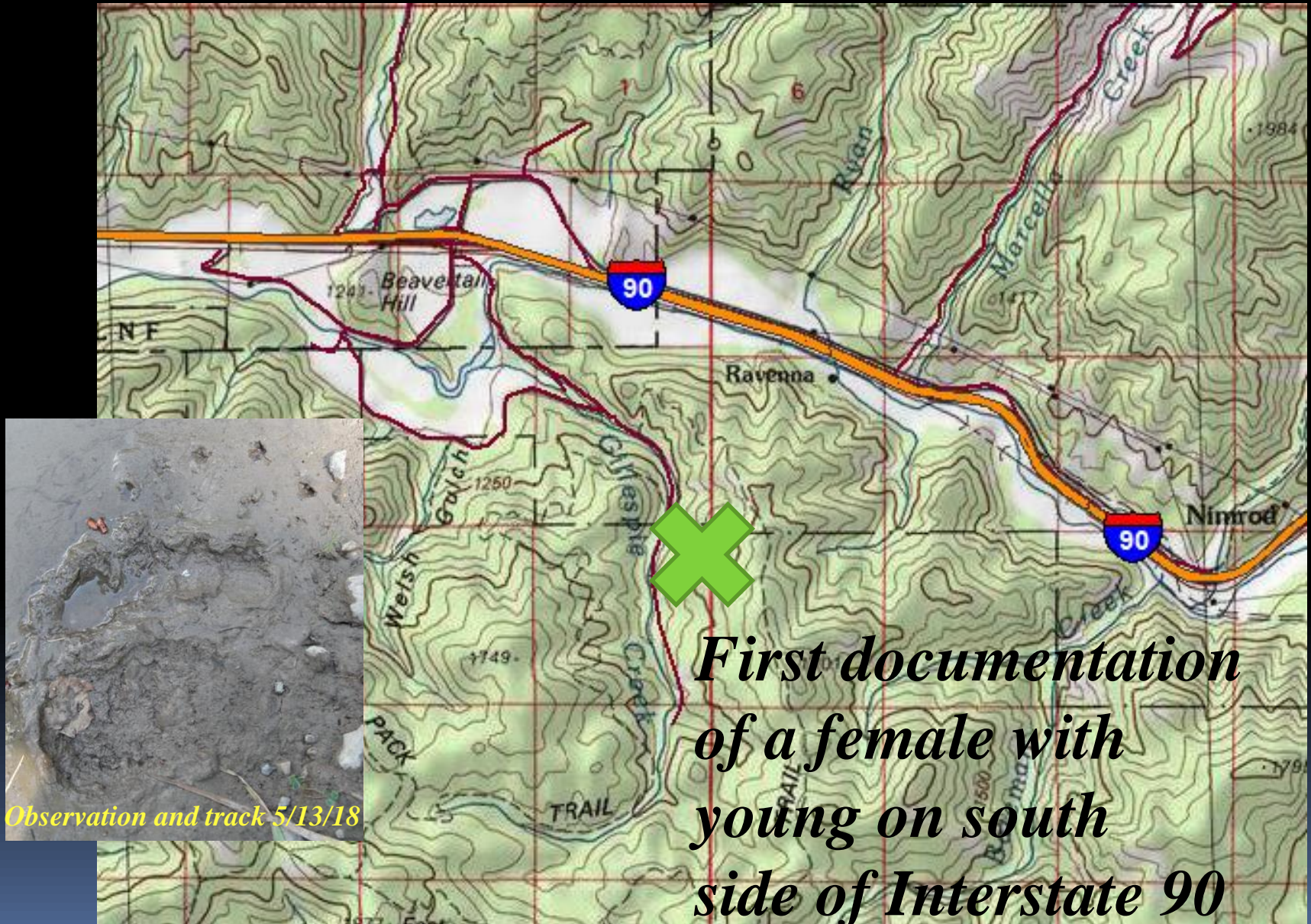


Turah/Clinton/Beavertail/Bearmouth Area

(5/14/09 to 6/4/09)



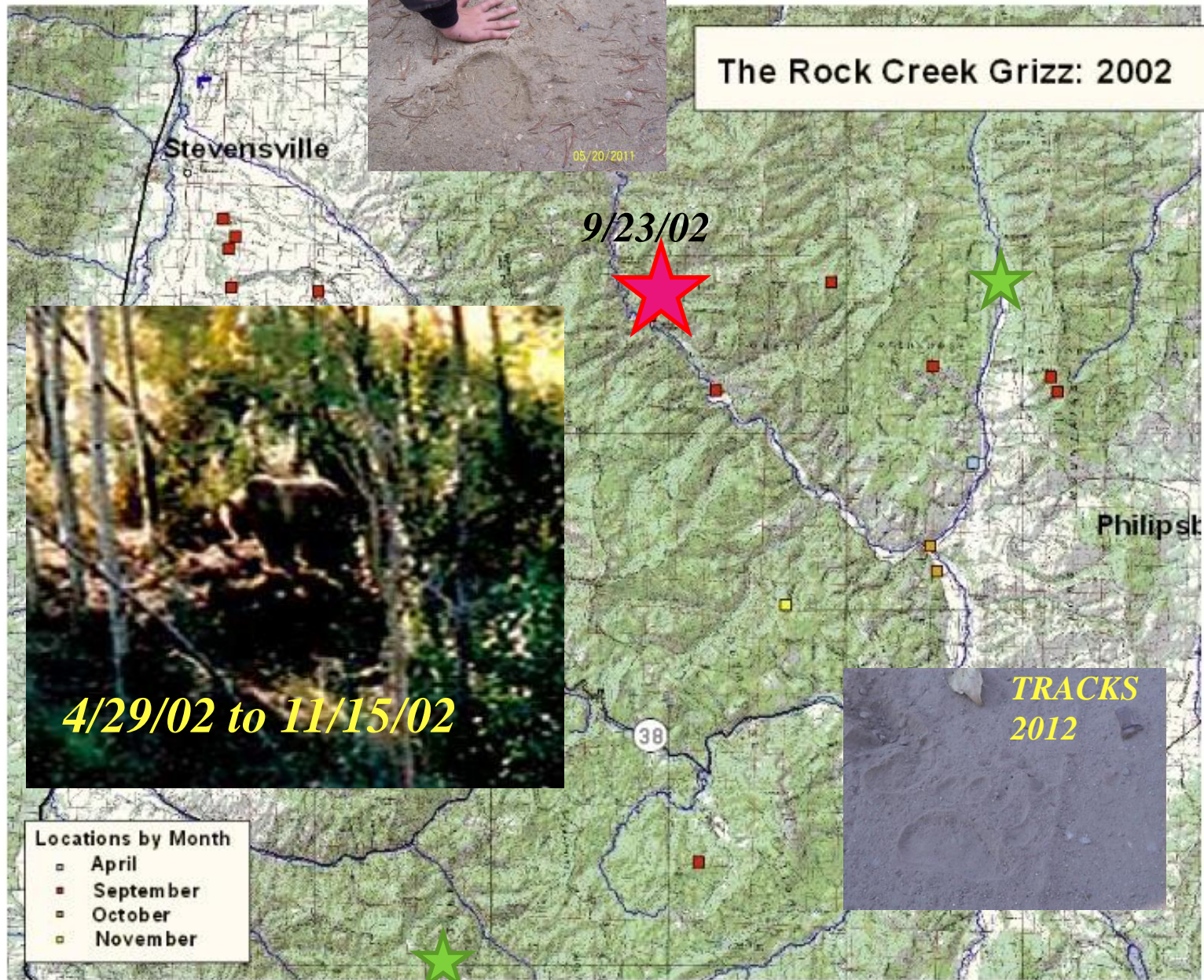
Female and three subadults----Gillespie Creek 2018



Observation and track 5/13/18

*First documentation
of a female with
young on south
side of Interstate 90*

Sapphire Mountains/Rock Creek!

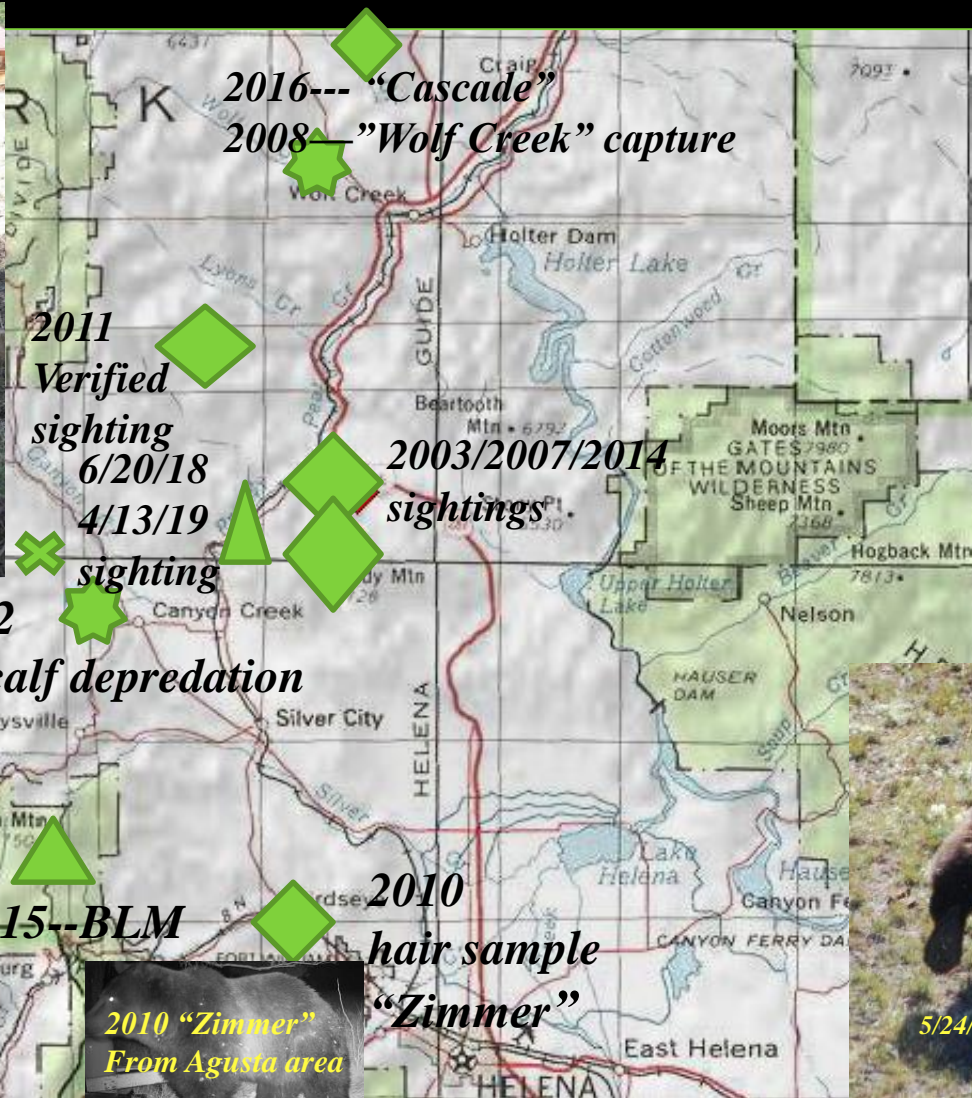


Helena Area-Canyon/Little Prickly Pear/Wolf Creeks

--- 2 conflicts, sightings, hair sample!



5/16/2008 Little Wolf Creek



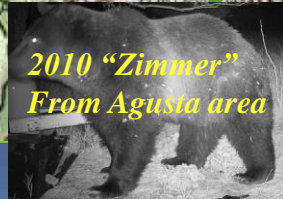
5/29/14 Sieban



6/15/16 Lepley Creek



8/20/15 American Gulch



2010 "Zimmer"
From Augusta area



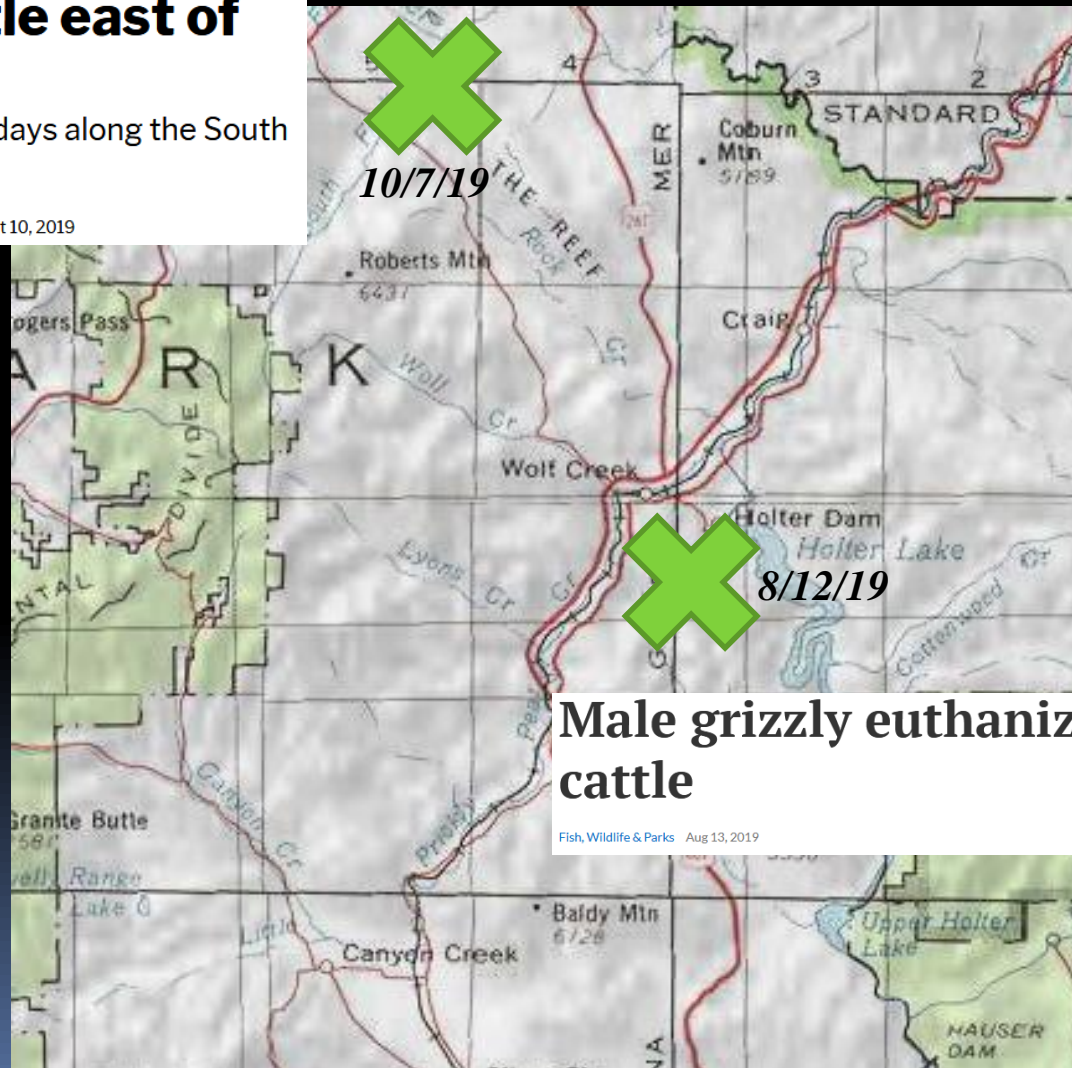
5/24/13 Mitchel Mountain

Two grizzlies removed Wolf Creek area----2019

Grizzly bear euthanized after killing cattle east of Rogers Pass

The bear had spent about 10 days along the South Fork of the Dearborn River

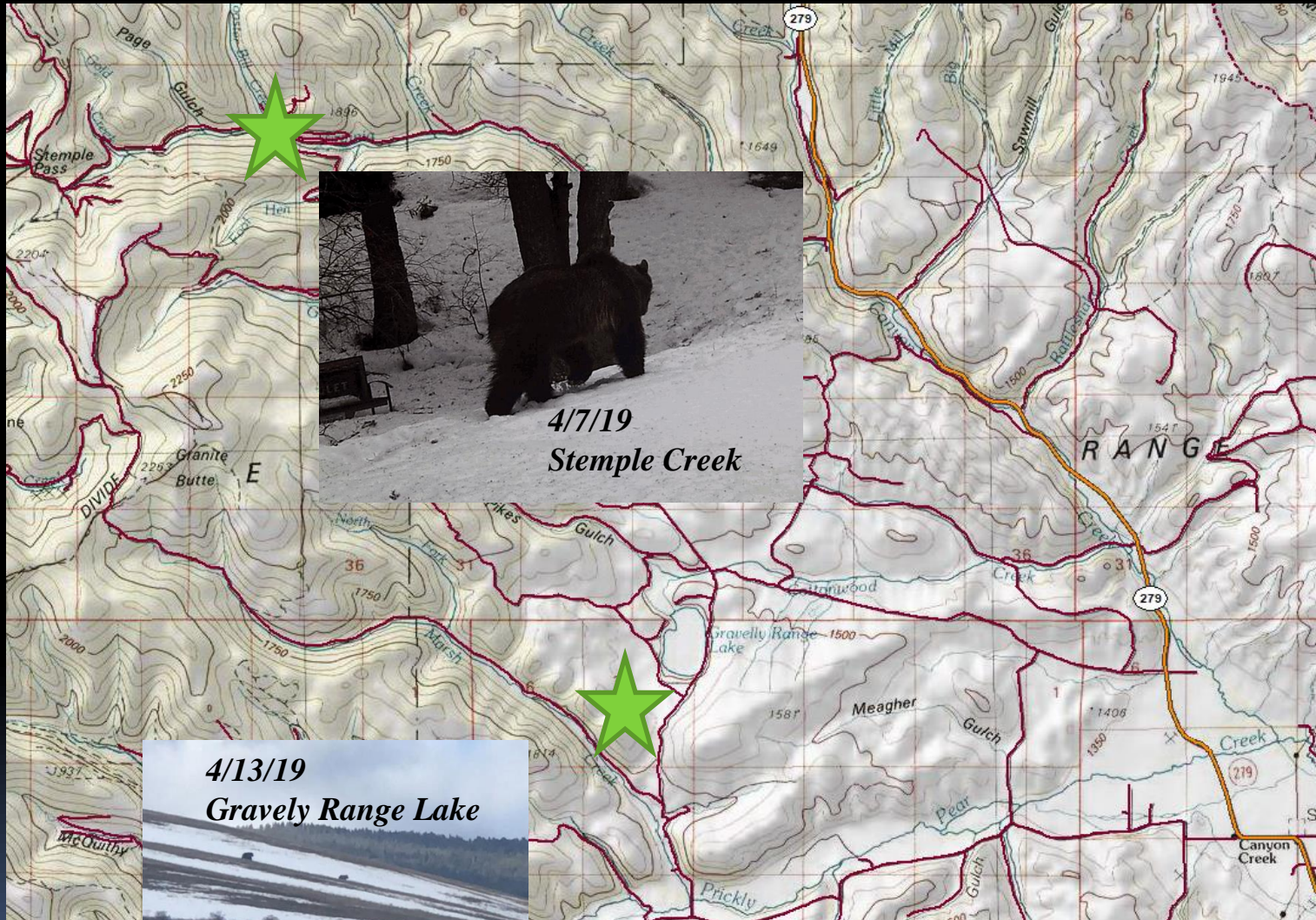
Posted: 3:58 PM, Oct 10, 2019 Updated: 3:58 PM, Oct 10, 2019



Male grizzly euthanized after killing cattle

Fish, Wildlife & Parks Aug 13, 2019

Stemple Pass/Gravely Range Lake 2019



4/7/19
Stemple Creek



4/13/19
Gravely Range Lake

4/9/19



July 2017



Grizzly bear photographed in Big Belt mountains

Karl Puckett, kpuckett@greatfallstribune.com

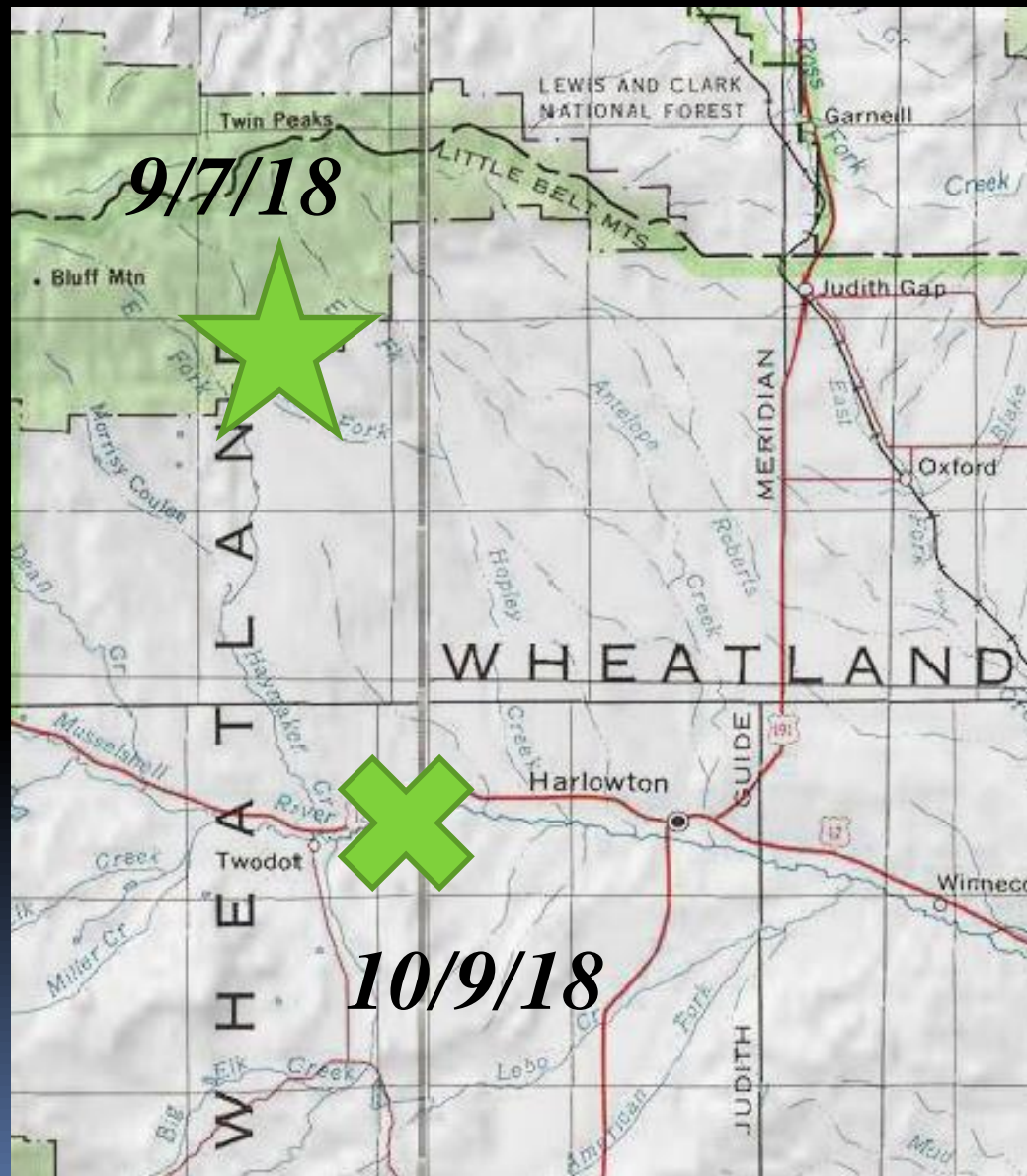
Published 2:59 p.m. MT July 19, 2017 | Updated 5:35 p.m. MT July 19, 2017

FWP euthanizes two male grizzlies after livestock depredation near Stanford

6/26/17



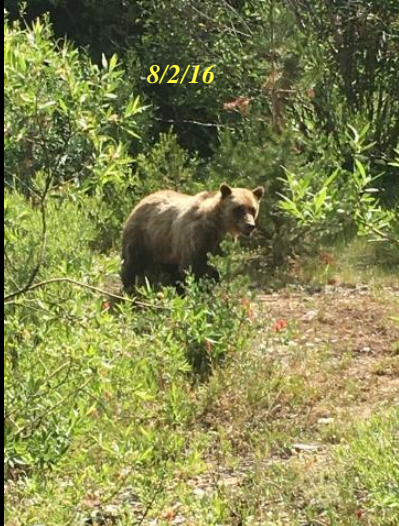
Little Belt Mountains---2018



-photo 9/17/18

-depredation 10/9/18





8/2/16

Basin Creek Male Conflict/Capture

8/2 to 8/16/16



9/1/16



8/16/16

Butte/Boulder River Basin

5/11/16 Butcher Gulch

7/13/16 Boulder River

7/14/16 Parke Lake

6/18/16 Eagle Creek

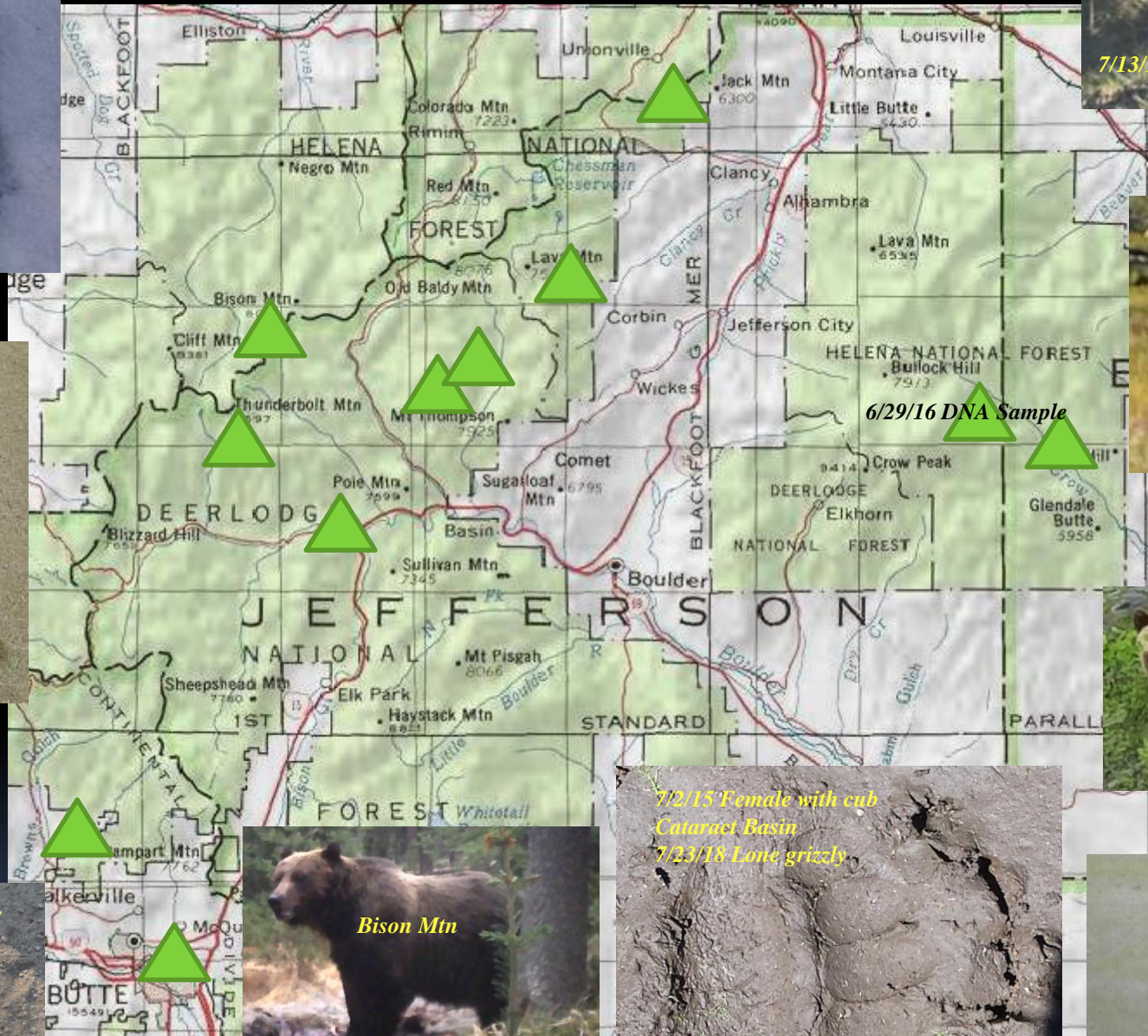
8/5/16 Lowland Creek

6/29/16 DNA Sample

7/2/15 Female with cub
Cataract Basin
7/23/18 Lone grizzly

Bison Mtn

5:29PM 08/22/18



Butte Area---2019

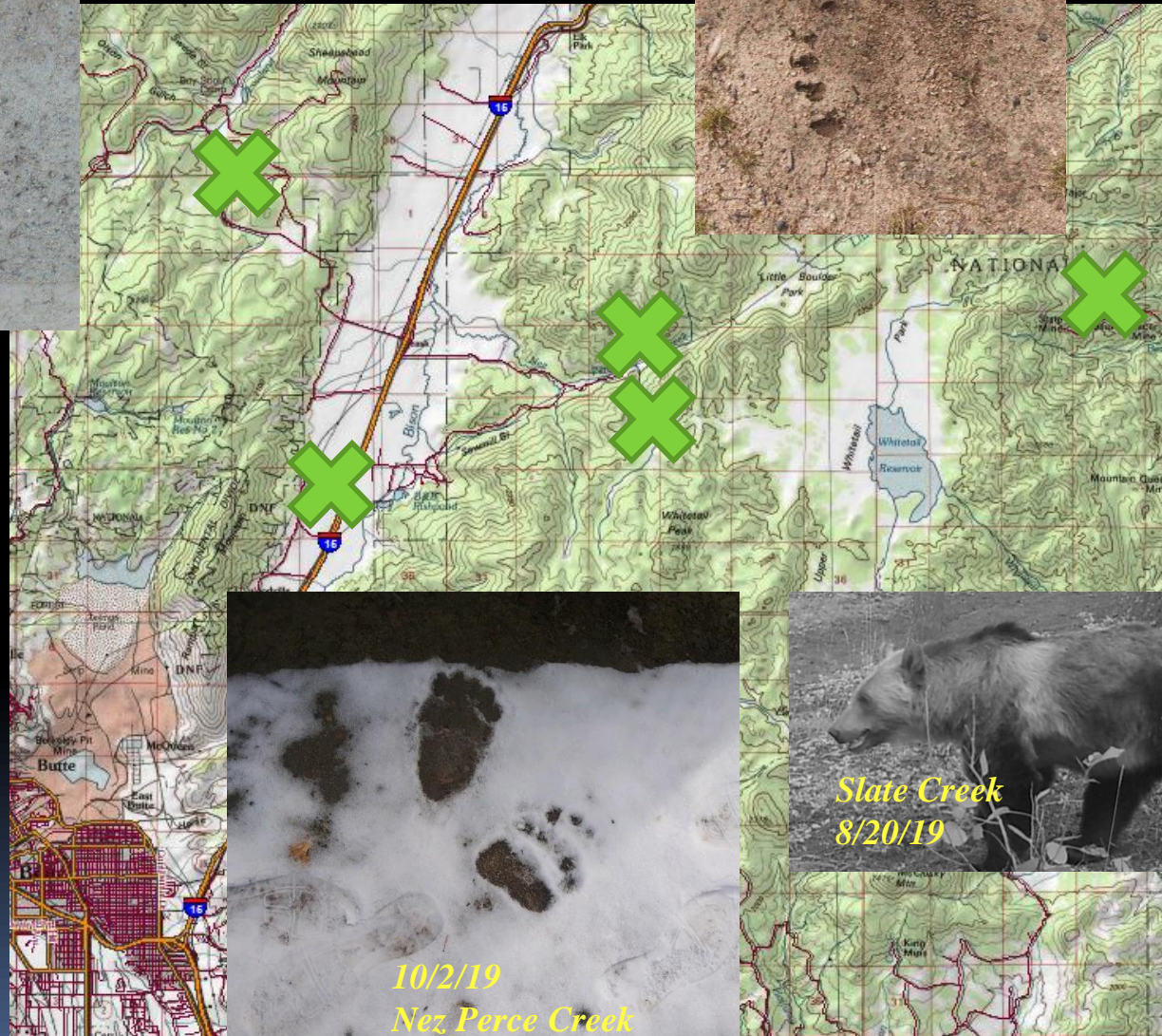
8-25-19

Bakers Meadows

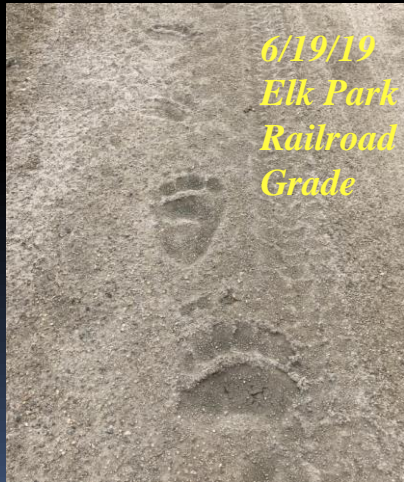


5-16-19

Maney Lake



6/19/19
*Elk Park
Railroad
Grade*

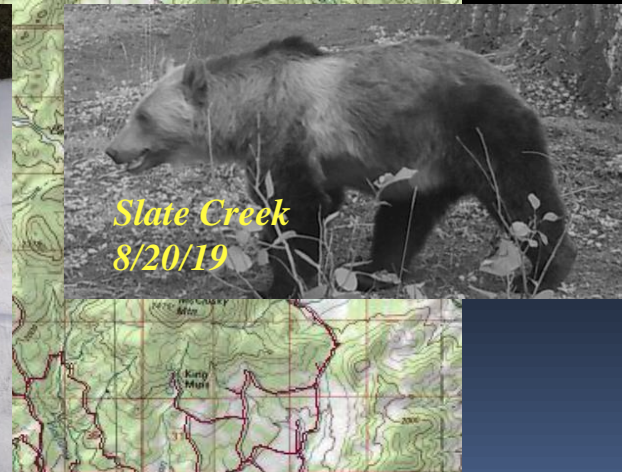


10/2/19

Nez Perce Creek



*Slate Creek
8/20/19*



Five Valleys/Missoula Area

----one confirmed mortality in the Bitterroot Range!



Ninemile area---one capture, tracks and photos!



1998
Track/visual
(USFS)

2017/2019 Tracks
(USFS/Tribe)

5/29/18
Road-kill
cub

5/19/18
Video



Evandro/Arlee Area: “Pistol” & “Valley”

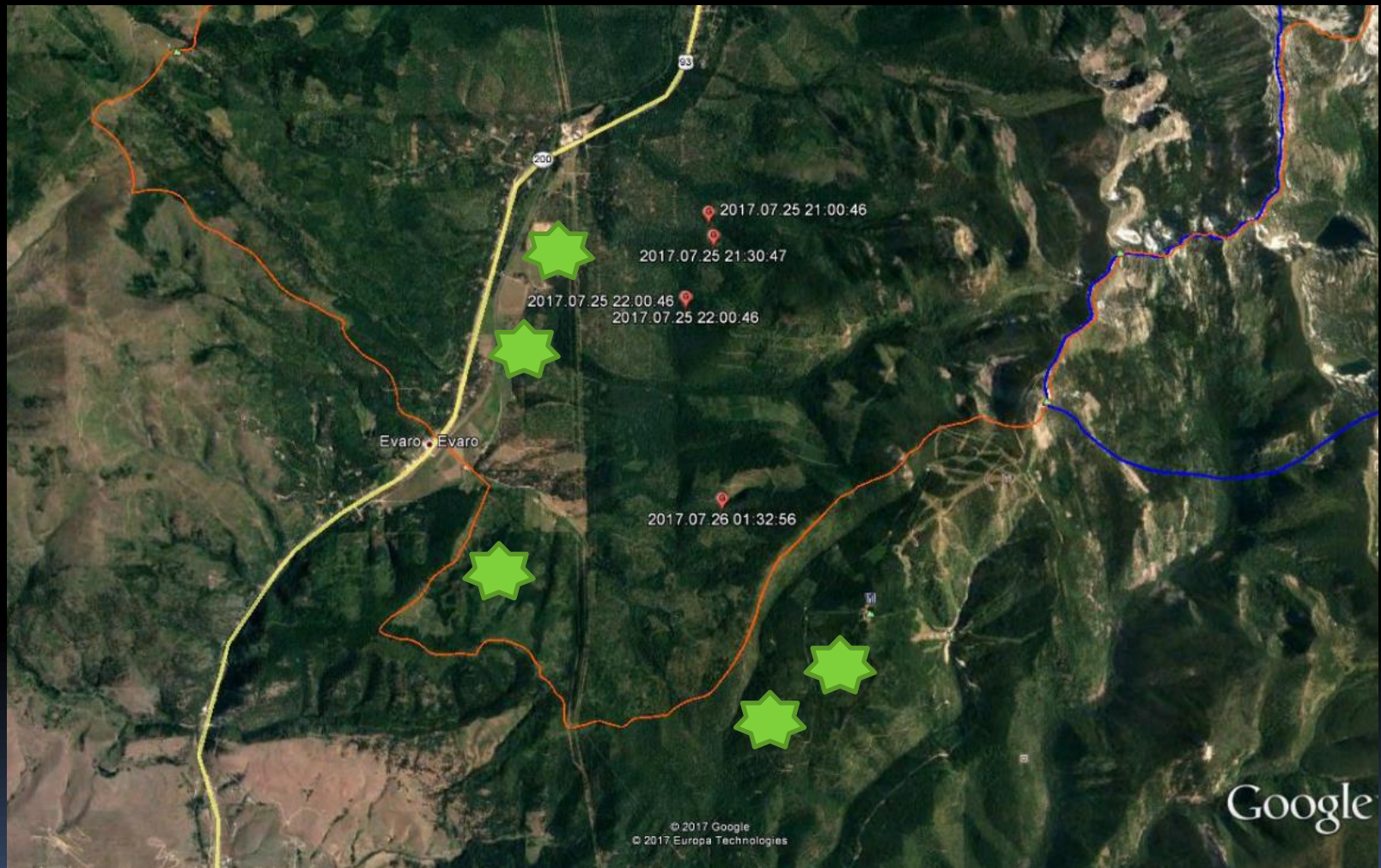
Non-target captures April 2012





*First radio-collared grizzly to visit the
Missoula Valley (2011) !!*

“Baptiste” July, 2017 & April, 2018

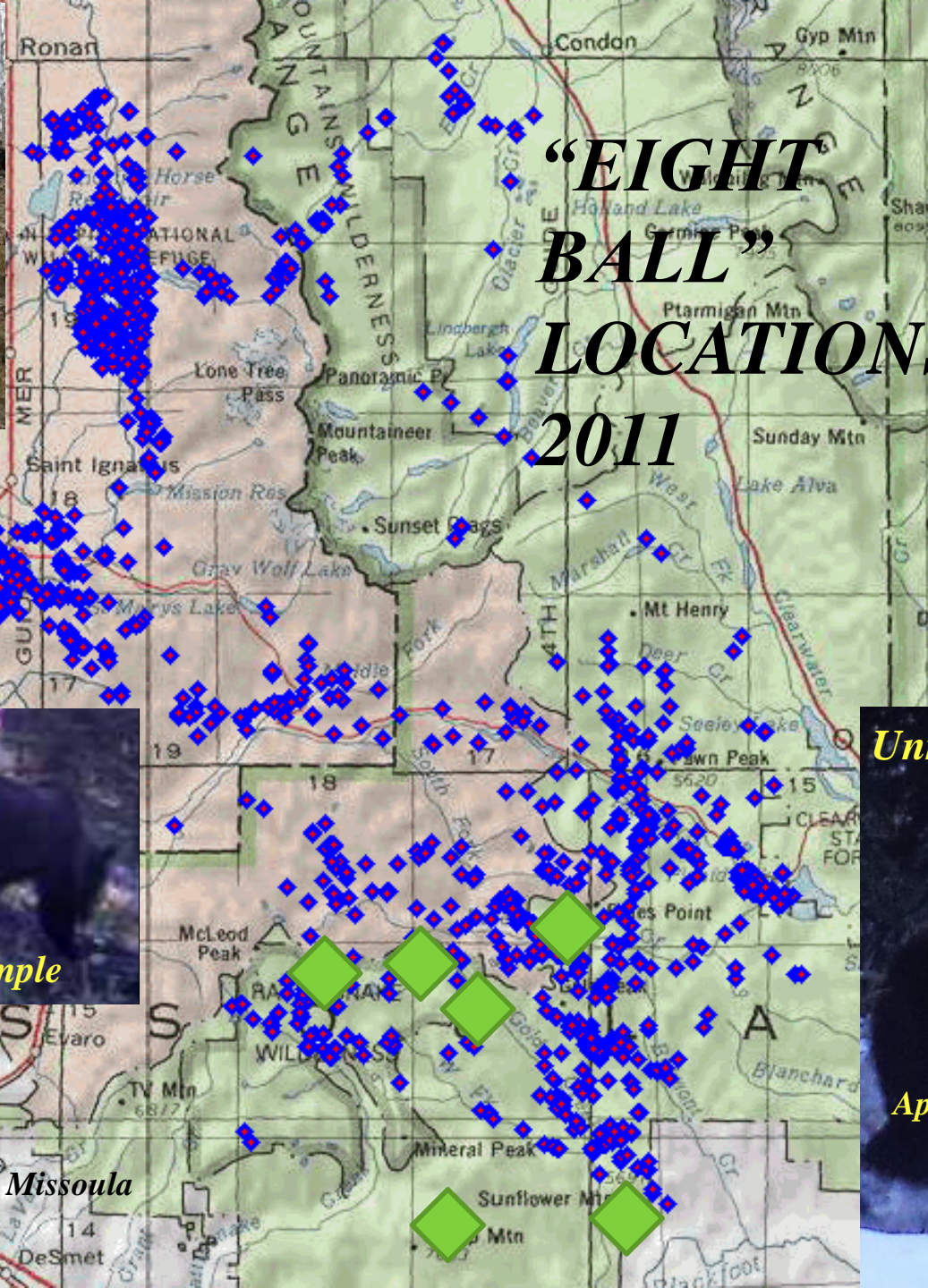


***Rattlesnake Wilderness Grizzly Bears
Sub Adult Male Grizzly “Eight Ball” (2011)
-other sightings and sign***





*Biscuit Root digging
2005-2017*



“EIGHT BALL” LOCATIONS 2011



2011



2012 den



2009 photo/2011 hair sample



*McCleod Pk
10/1/18*

Missoula



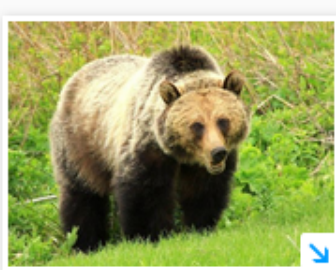
Unmarked Grizzly 2017

April 2017 Gold Creek

Officials investigating grizzly bear shooting death

The Associated Press

Published 9:21 a.m. MT May 31, 2017 | Updated 9:21 a.m. MT May 31, 2017



(Photo: File image)

f5
CONNECT

TWEET

in
LINKEDIN

COMMENT

EMAIL

MORE

MISSOULA — State and federal wildlife officials are investigating after a black bear hunter reported shooting a grizzly bear about 5 miles northeast of Missoula.

U.S. Fish and Wildlife Service spokesman Ryan Moehring says the bear was killed on May 16 north

of Bonner.

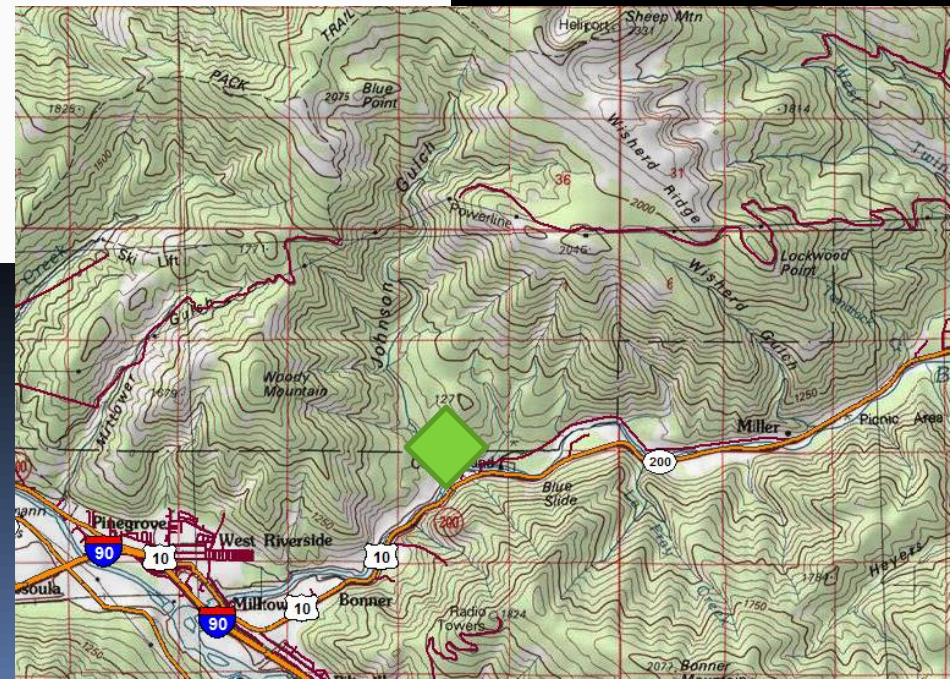
Moehring says the Fish and Wildlife Service and Montana Fish, Wildlife and Parks officials are investigating and will make more information public when they can. He told the Missoulian on Tuesday it was U.S. Department of Justice policy not to comment on ongoing investigations. He did not release the age or sex of the dead bear.

Grizzly bears are a protected species under the Endangered Species Act.

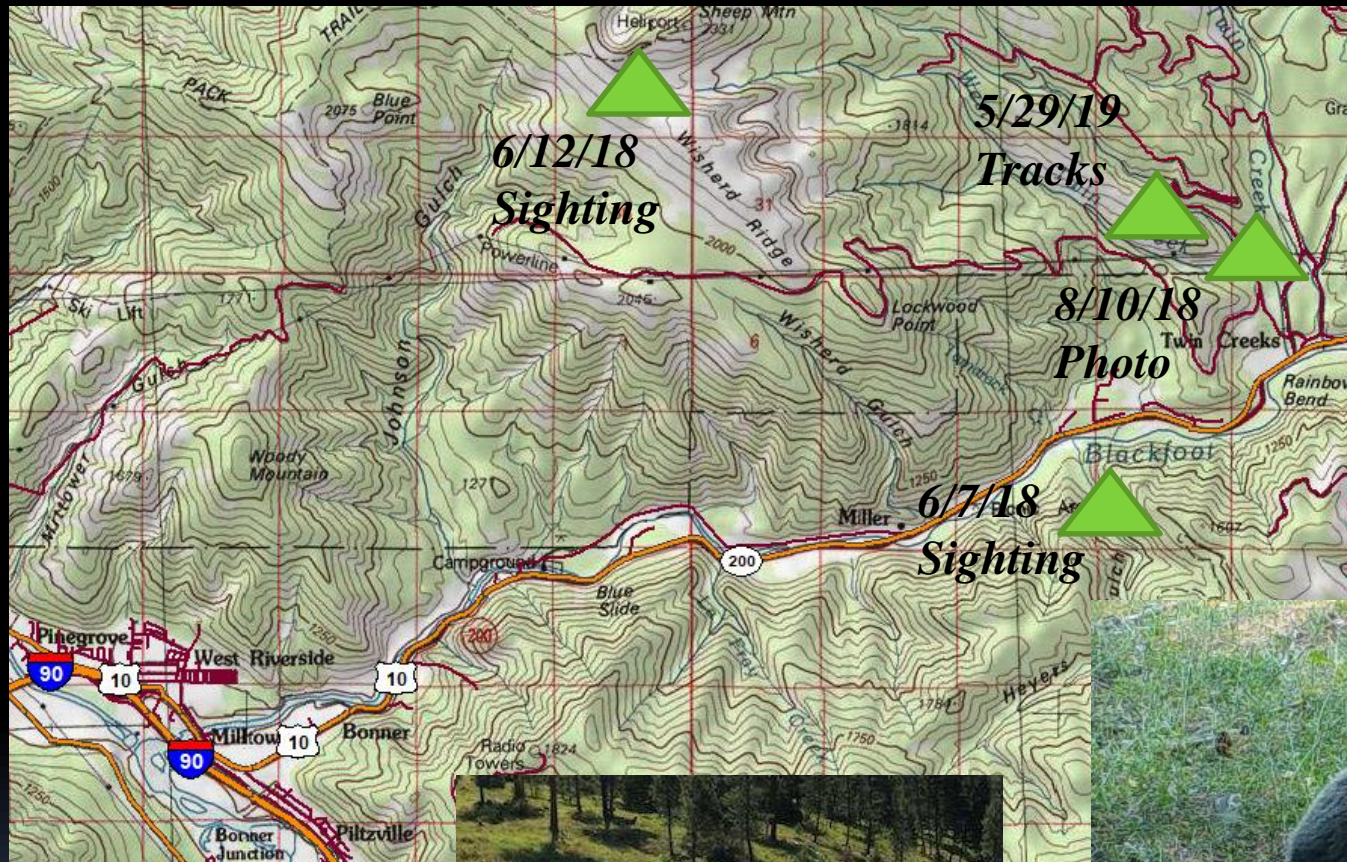
Andy Lennox, who lives a mile north of Bonner, said he was upset to have heard about the shooting second hand.



Bonner, Montana
5/16/17

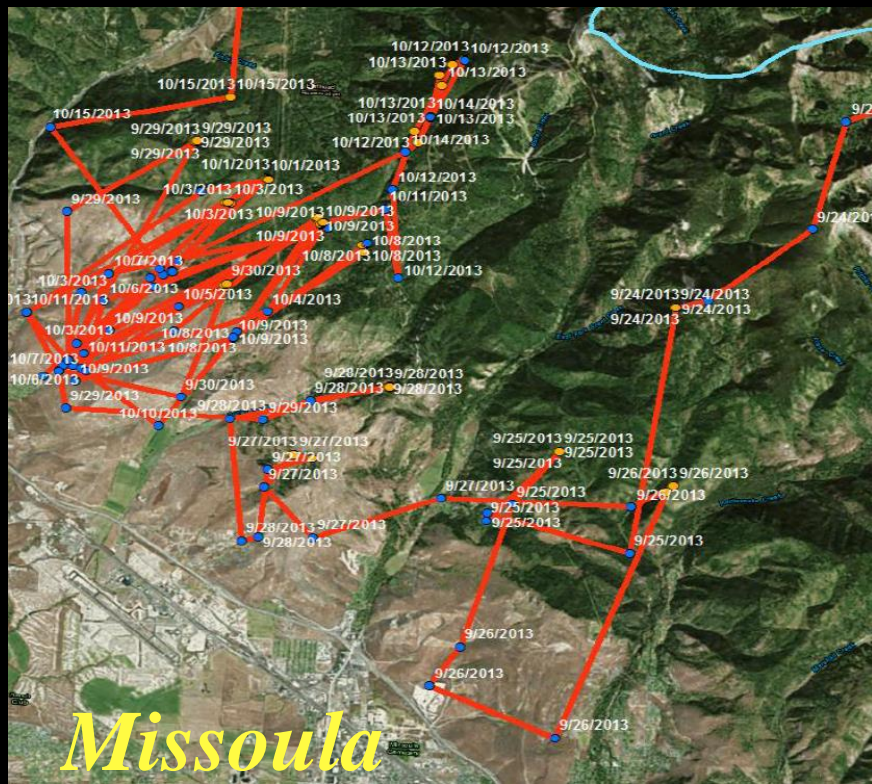


Bonner Area observations---2018/2019

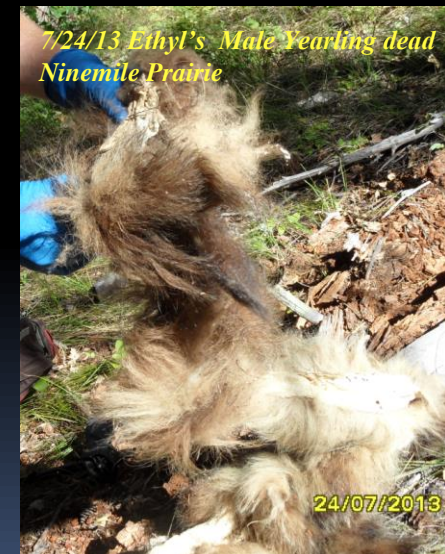


Gold Peak 3/25/2019





September 2013 Snowbowl

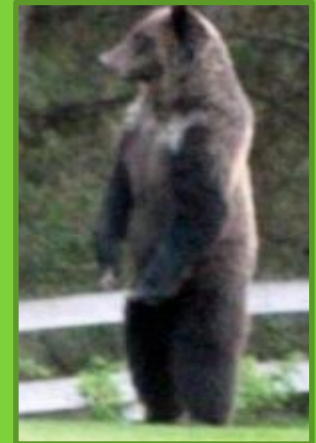
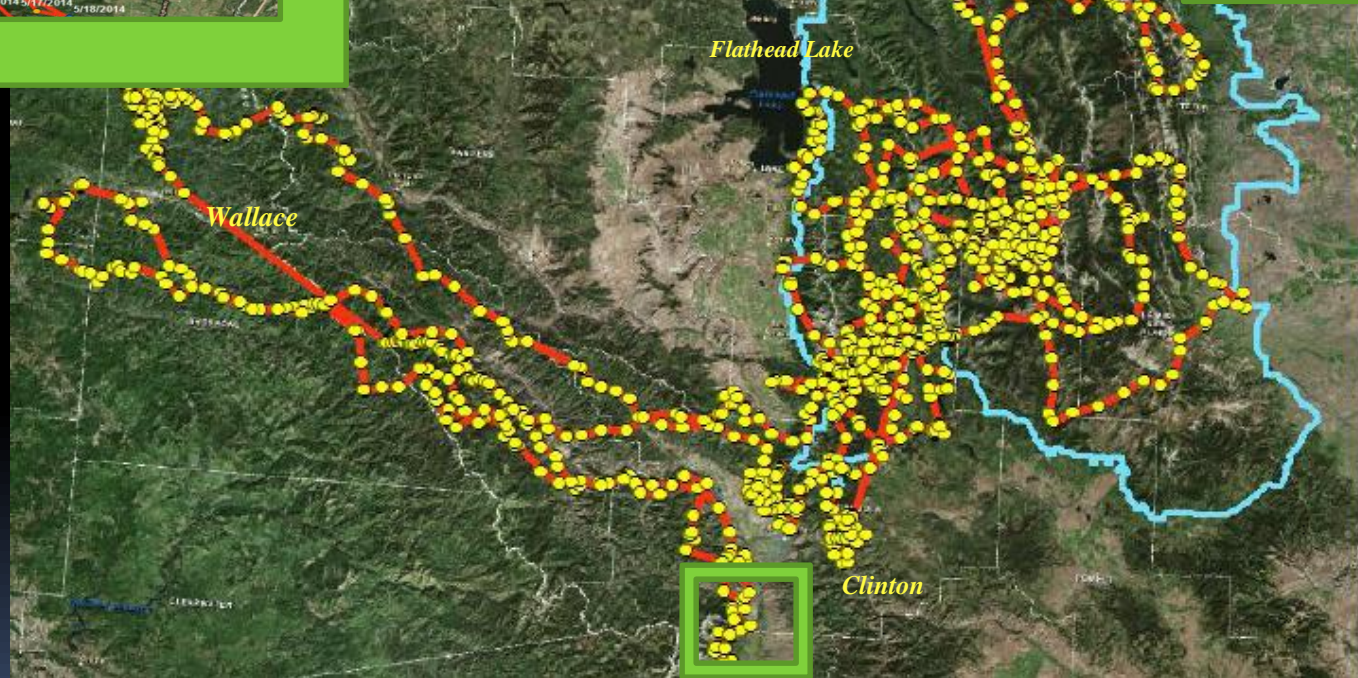


*7/24/13 Ethyl's Male Yearling dead
Ninemile Prairie*

The grizzly known as "Ethyl" 2012/2013

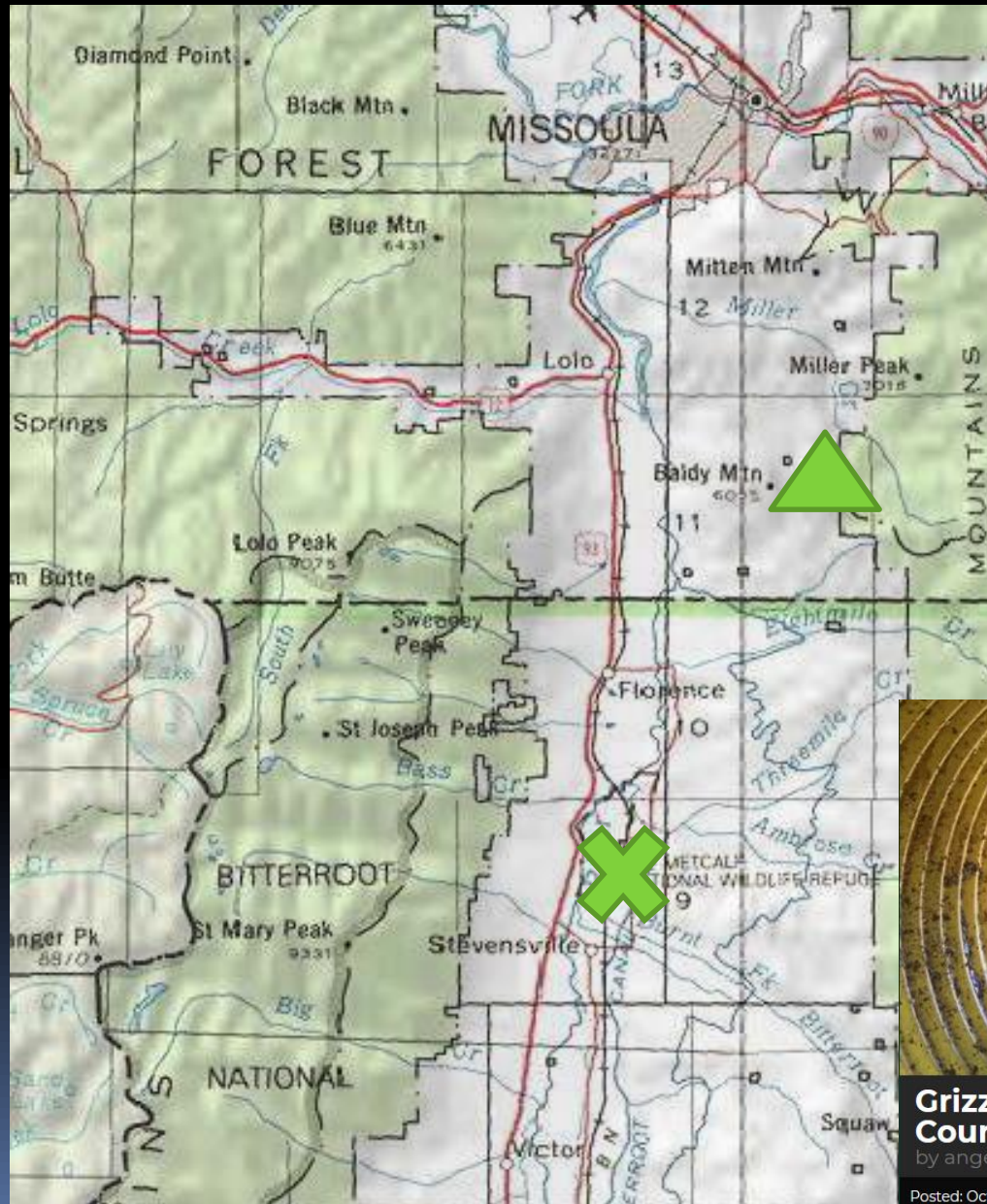


Ethyl 2012-2014



*Female extraordinaire---
Ethyl goes on a “walk about”!!*

Bitterroot Valley---2018



09/29/2018 08:57PM CAMERA 1



Grizzly Bear Trapped at Stevensville Golf Course

by angelamontana

"Stevi" captured and relocated

10/27/18

Posted: October 28, 2018

“Stevi”---7/18/19 Euthanized in Seeley area!

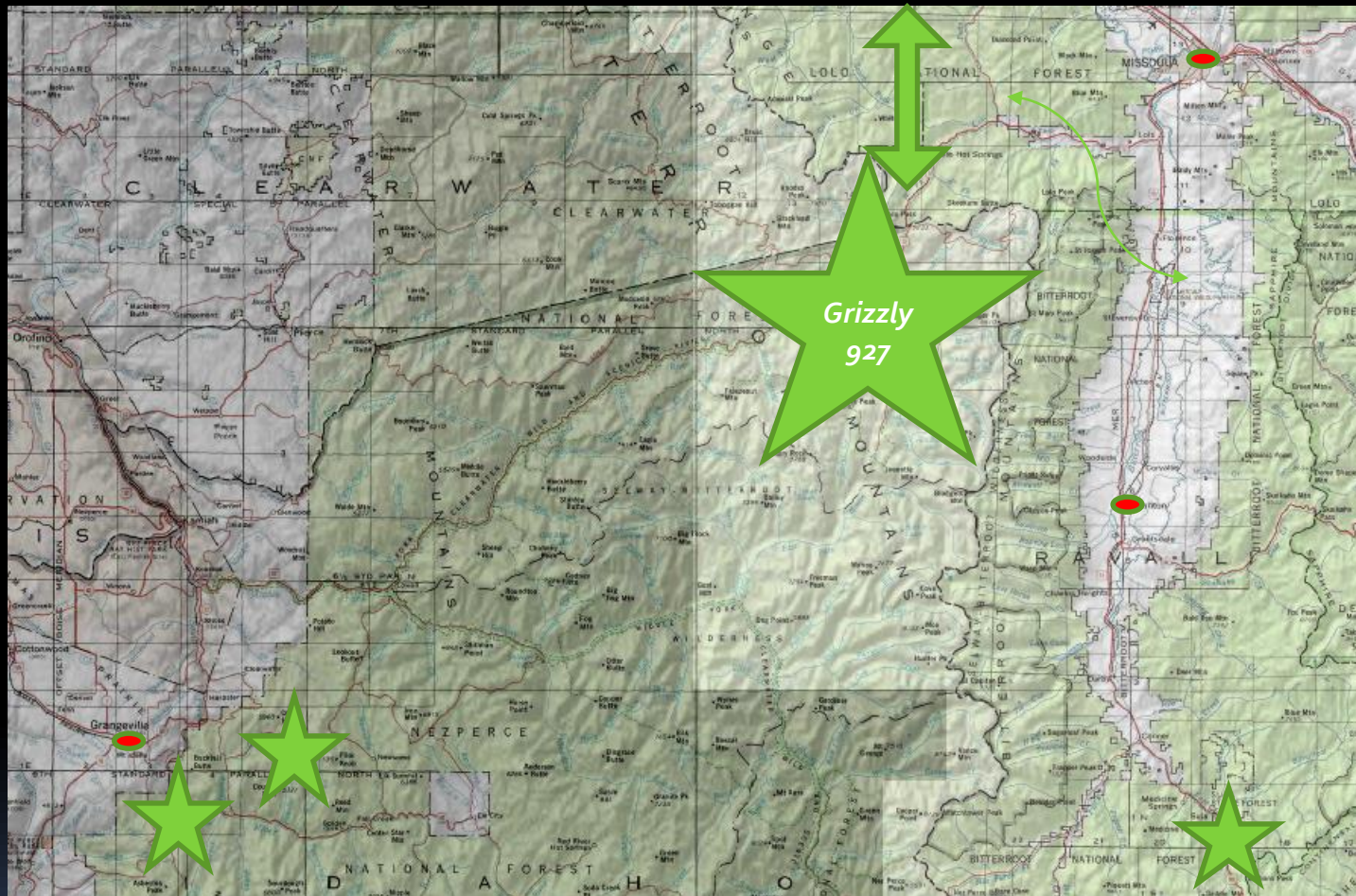


- *DNA--- born to a female in Swan Valley*
- *Denned northwest of Seeley Lake*
- *In early spring near home sites*
- *Accessed uncontained garbage*
- *Accessed uncontained grain*
- *Damaged campers*
- *On porches for BBQ and pet food*
- *Entered buildings/at tent sites*

***Did he learn bad
Bad habits in
The Bitterroot,
Blackfoot or Swan?***



Bitterroot Ecosystem---2019



- *Grizzly 927's Southern adventure*
- *False alarm at Lolo Pass*
- *Tracks at Lookout Pass*
- *White Bird and Elk City, Idaho Grizzlies*

Grizzly Bear 927:

- *Crossed I90 6/3/19*
- *Kelly Creek 6/16 to 6/23/19*
- *Photographed Bungalow 6/20/19*
- *Photographed Locksa 6/25/19*
- *Crossed Hwy 12 heading South 7/5/19*
- *Big Lake, MT 7/12/19*
- *Mill Creek MT 7/15/19*
- *Hucks in Brushy Fork (July and Aug)*
- *Black bear baits (Sept)*
- *Cross Hwy 12 heading North 9/20/19*
- *Photo is Fish Creek 9/25/19*
- *Located Fish Creek 10/8/19*
- *Back in the Cabinet-Yaak 11/22/19*

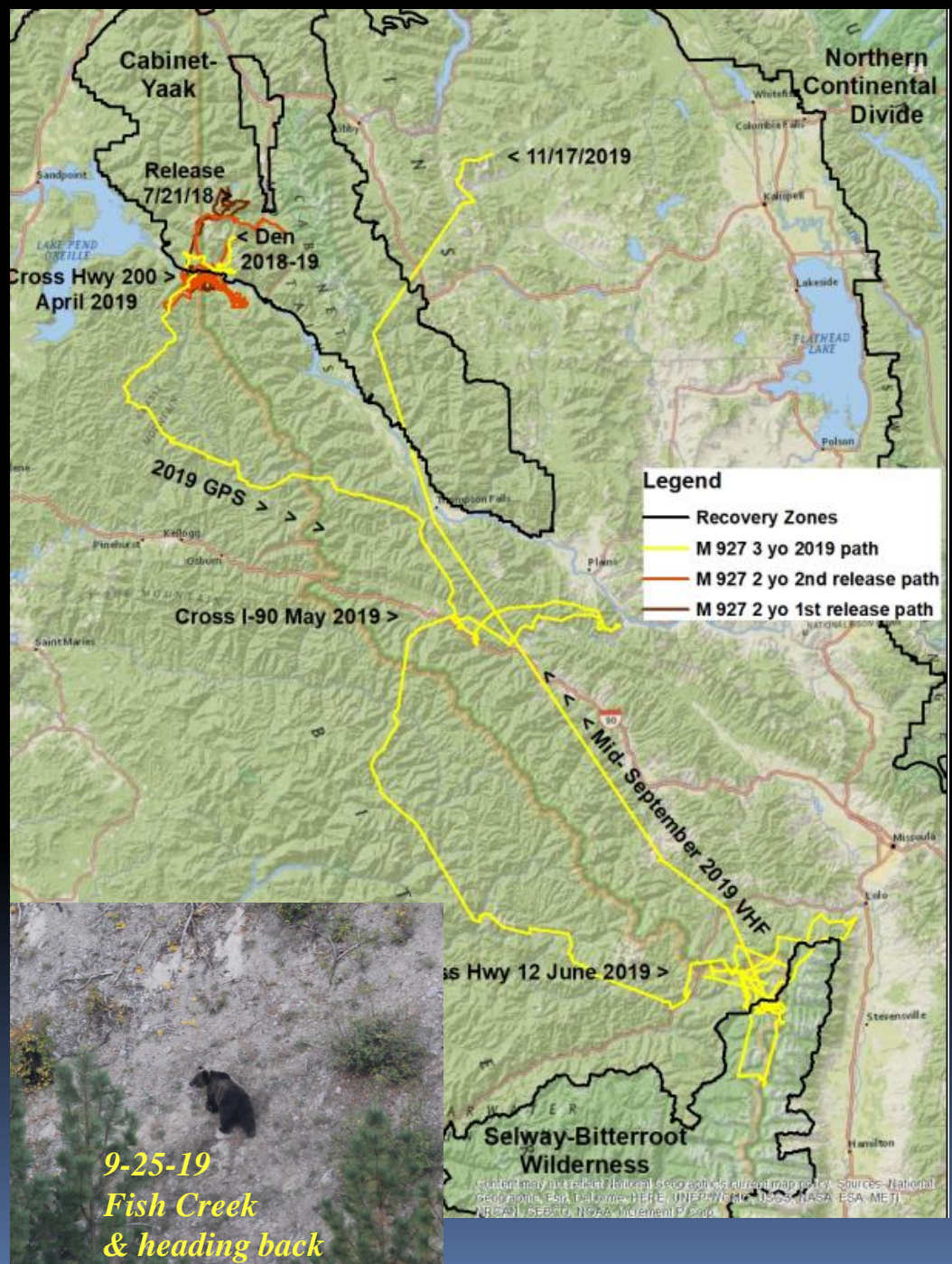
*Bungalow, Id
6/20/19*



*Locksa
6-28-19*



*9-25-19
Fish Creek
& heading back*





9-11-19

*Grizzly 927
spent time
feeding on
huckleberries
but also Idaho
black bear
baits.*



9-12-19



9-11-19



9-13-19



Was there a 2nd grizzly With 927?

- *Trying to determine*
- *Working with hunters*
- *Working with outfitters*





Korrie Knechtges Butler ► Lolo MT
Community outreach group

Yesterday at 10:27 PM · 🌐

Hey all.... just a heads up....there are a couple Grizzlies wandering around the lolo hot springs campground so please be advised & aware. Chrissiey Collins

10/3/19



Was Grizzly 927 at Lolo Hot Springs?

- ***nope!***
- ***false report***
- ***photo from Hebgan Lake***
- ***photo of black bear at odd angle***
- ***black bear tracks/not grizzly***



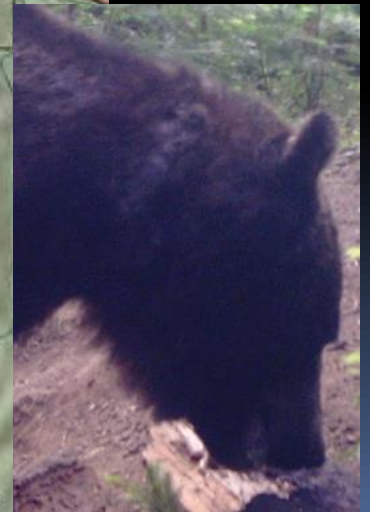


Lost Trail Ski area
11/11/19

*White Bird, Id----
where did this
bear come from?*



6/23/19



Elk City, Id----

And another grizzly in 2019!



Second grizzly likely visited north central Idaho last year

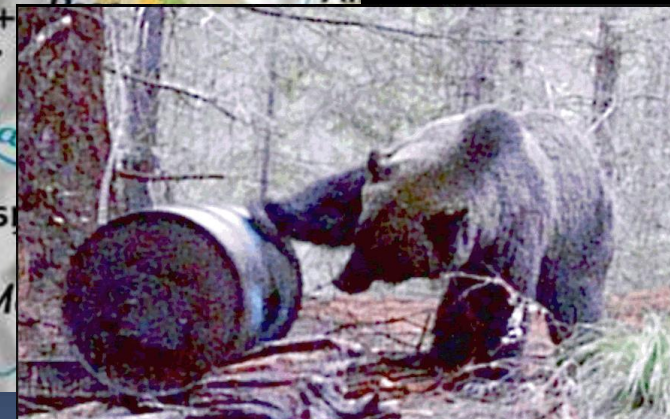
Lapwai man caught images of bear on trail camera

By Eric Barker, of the Tribune Jan 17, 2020 Updated Jan 17, 2020



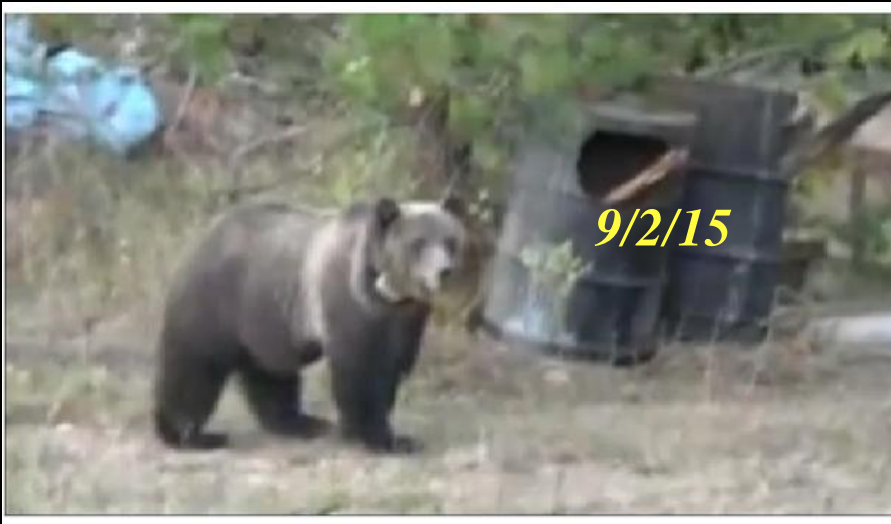
A picture of a bear that wildlife experts say most likely is a grizzly was captured last fall at a baiting station in the Newsome Creek drainage near Elk City.

Jim Alfrey



Photos of a bear that wildlife experts say most likely is a grizzly were captured last fall at a baiting station in the Newsome Creek drainage near Elk City.

Jim Alfrey



IDAHO /MONTANA BORDER

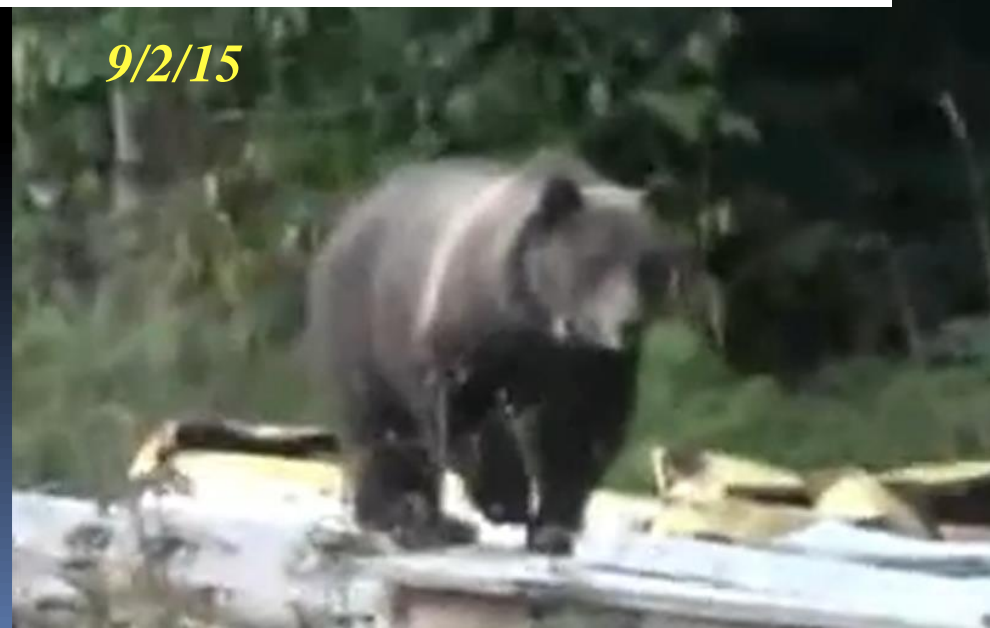
Officials trying to recapture Montana grizzly bear sighted along Coeur d'Alene River

Fri., Sept. 11, 2015, 10:14 a.m.

Thought it was a black bear.

Thu., Oct. 1, 2015, 4:58 p.m.


Hunter kills well-publicized collared grizzly bear near Wallace



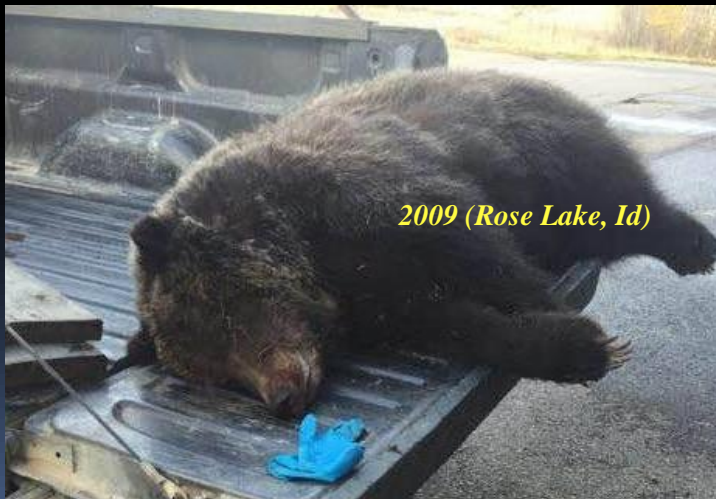
Elk farmer shoots grizzly in N. Idaho

Thu., June 11, 2009

Bear dug under 12' farm fence and killed an elk.

By **Becky Kramer** 
beckyk@spokesman.com
(509) 459-5466

Man near Rose Lake says he mistook endangered animal for black bear



2009 (Rose Lake, Id)



Big Hole Valley -- YSE or NCDE?



6/18/16 McVey Creek



Bow hunters relinquish elk to grizzly in Big Hole 11/16

DAVID MCCUMBER For the Ravalli Republic Sep 6, 2016



8/17/16 Little Lake Creek



**Tie Crk cache
9/19/18**



6/15/16 Doolittle Creek



**LaMarsh Crk
10/26/18**

Miffin Creek Grizzly-----Big Hole 8/28/19





Questions?